



# The Alford American Family Association

Serving the Alford community over 25 Years  
We Are Family!!

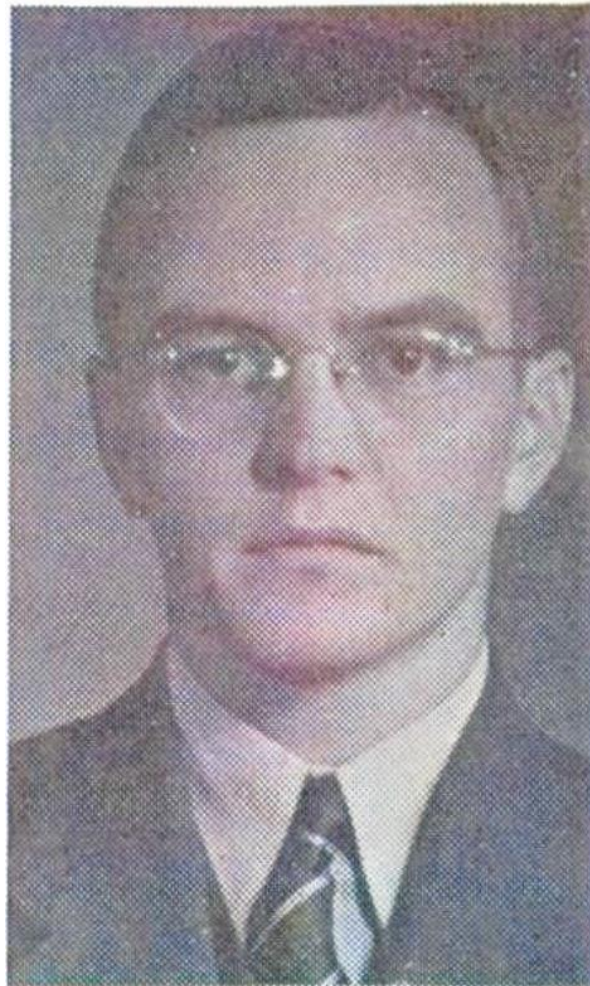
---

## Charles Alford Norvell

AAFA #0221

Charter Member

September 25, 1910 – June 7, 1998



### Obituary

HENDERSON – Services for Charles Alford Norvell, 87, Henderson, are scheduled for noon Saturday at First Presbyterian Church, Henderson, with the Rev. John Zigler officiating.

The burial will be in Lakewood Memorial Park under direction of Crawford A. Crim Funeral Home, Henderson.

Mr. Norvell died June 7 in a Dallas hospital,

He was born Sept. 25, 1910, in Austin and lived in Henderson most of his life. He was a descendant of early Rusk County settlers and served in the Navy during World War II. He graduated from Rice University and was a retired original partner of Henderson Insurance Agency and former secretary/treasurer of Henderson Lions Club.

Survivors include his wife of 63 years, Nita Norvell, Henderson; sons, John Charles Norvell, Potomac, MD, and Sam Norvell, Dallas; and five grandchildren.

Pallbearers include Neil Pennal, Dick Bishop, Jack Gray, John Tieken, Phil Stanley and Bob Schauwecker.

Published in the [Tyler Morning Telegraph](#), Tyler, TX on Friday, 12 June 1998.

Obituary and photo provided by [CJ McLaughlin](#) on 25 Mar 2023.

Information and photo were copied from the [Find-A-Grave](#) web page.

## **Personal Data**

Birth:	25 Sep 1910 Austin, Travis County, Texas, USA
Death:	7 Jun 1998 (aged 87) Dallas, Dallas County, Texas, USA
Burial:	Lakewood Memorial Park Henderson, Rusk County, Texas, USA
Memorial ID:	54030330



Photo Added by: [RIPFinderRIP](#) on 21 Dec 2014  
Permission granted by the photographer.

## Family Members

- Parents  
John Abe Norvell, 1882–1941  
Angie Brownie Alford, 1884–1969
- Spouse  
Juanita “Nita” Sitton, 1910–2000 (m. 1935)
- Siblings  
John E Norvell, 1905–1934  
Dorothy Norvell
- Children  
John Charles Norvell  
Sam Norvell

Information copied from the [Find-A-Grave](#) and [Ancestry](#) web pages.

## AAFA Notes:

1. His mother’s Alford lineage: Angie Brownie 1884 AL<sup>1</sup>, James Wooten 1853 AL<sup>2</sup>, John Rogers 1810 GA<sup>3</sup>, Kinchen 1779 NC<sup>4</sup>, James 1741 NC/VA<sup>5</sup>, Lodwick 1710 VA<sup>6</sup>, James 1687 VA<sup>7</sup>, John 1645 VA<sup>8</sup>.