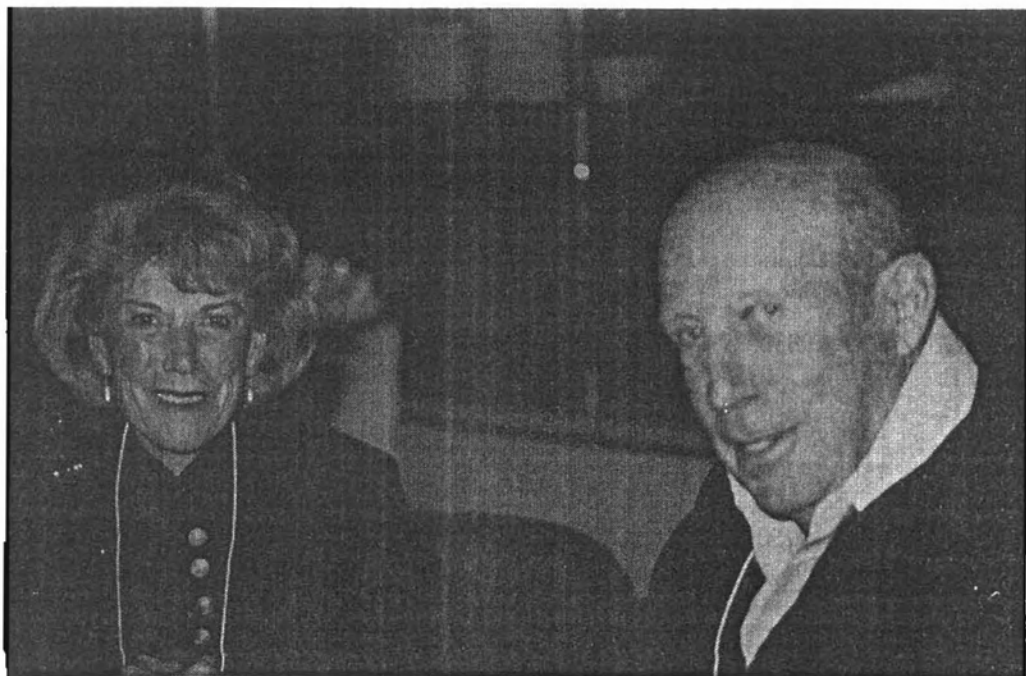


More Photos from 1997 Meeting in Pleasanton



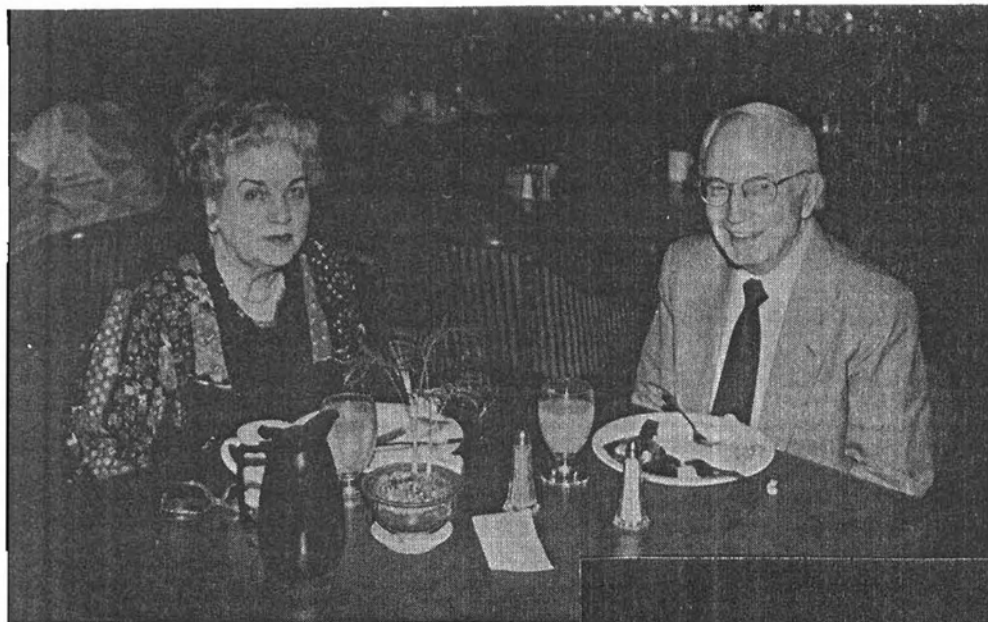
Dovie Jean Alford, #110 TX, Evonne #130, and her husband Jim Alford, #115 TX, visit with their California cousin Donald Alford, #515 (seated) and his wife Colette. Dovie, Evonne, and Donald descend from Halcut Alford born 1788 in Georgia. These three members represented the 36 AAFA members who descend from that branch. Jim is one of four AAFA members who descend from Lodwick Alford born 1812 in Georgia.

Cousins Elizabeth T. Mohle, #424 TX and David Gaston Alford, #503 TX visited at the reception on Friday night. Like the family group on the next page, they are descendants of Needham Alford born 1789 in NC. Elizabeth and Gaston both live in San Antonio, but they had never met until AAFA brought them together in California!





Everyone in this family group descends from Needham Alford born 1789 in NC (from the JAM687VA line). Back row: Lori and Owen Alford, #973 CA, with daughter Rachel; Mary Foy Alford, mother of Owen, Tom, Kathy and Howard; Tom Alford, #974 CA; Kathy Alford, #644 CA; and Howard Alford, #971 CA, and his wife Teresa. The children in front are Maryanne, Jesse, and Jacob, daughter and sons of Lori and Owen.



Kate and Robert Hollingsworth, #772 MS. Robert is descended from Edward Alford, born 1792 in NC. He was not only the only representative of that branch at the meeting (of the 35 EDW792NC members), he and Kate were also the only members who attended from Mississippi!

Phil and Nell Alford, #871 CA, visit with Barbara and Frank Alford, #879 CA. Twins Phil and Frank descend from Lewis Alford, born 1814 in VT—some members of their family who also attended the meeting are shown in the photo on the next page.



Robert D. Alford, #197 TX, shows off the door prize he won on Saturday night. The framed AAFA badge is in full color and is a popular item at the AAFA store. Robert is the only AAFA member descended from CLA born 189_ in GA. A member since 1989, he's still hoping for a breakthrough on his line!



Seven of the eleven AAFA members who are descendants of Lewis Alford, born 1814 in VT, joined us in Pleasanton! They are Willie Mae and Harold Hill, #878 CA, Barbara and Frank Alford, #879 CA, and Frank's twin brother Phil Alford, #871 CA, and their sister Jeannine Alford Megert, #723 CA, Nell Alford (Phil's wife), Phil and Nell's daughter Jeanette Alford Lee, #650 CA, Alfred Megert, Frank's son Philip D. Alford, #668 CA, and his wife Sandra, and Ann and Vince Callaway, #914 AZ. In front are Amanda and Jessica Lee, daughters of Jeanette Lee.

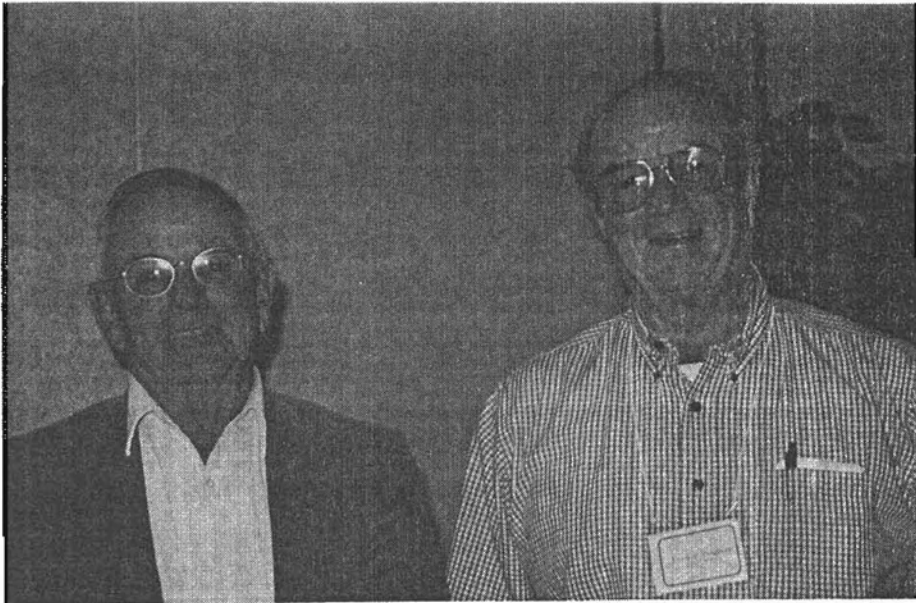


Guest Bill McKenzie and Janet A. Hemby, #832 TX, and Don and Joan Alford, #059 NV. Janet and Don are descendants of David Alford born 1785 in Virginia, two of eighteen AAFA members descended from that branch.

Ferman and Connette Halford Blalock, #381 CA. Connette is the only AAFA member who descends from David Halford born 1792 (David was the son of John Halford born 1765 in VA).



R.M. "Dick" and Connie Alford, #633 ID. They are one of three AAFA members who live in Idaho, and Dick is the only AAFA member who is descended from Orson Alford born 1806 in NY (from the BEN619EN line).



Robert Pangburn, #929 CA, and his brother Frank Pangburn, #868 CA, are descendants of Landy Alford, born 1804 in Virginia. Robert and Frank are two of the three AAFA members who descend from Landy.

AAFA Mystery Phrase Word Game

By Doris Vetri, AAFA Treasurer

Circle the words and the remaining letters form the Mystery Phrase! (The answer is on page 86.)

- | | |
|--------------|-------------------------|
| AAFA | Photo |
| American | Pleasanton CA |
| Annual | Pres [President] |
| Atlanta GA | Raleigh NC |
| Attend | Register |
| Board | Renew |
| Buffet | Reports |
| Columbus Day | Research |
| Decatur AL | Richmond VA |
| Destin FL | Sec [Secretary] |
| Fall | Select |
| Family | Springfield MO |
| Friends | St Francisville LA |
| Great | Tag |
| Houston TX | Task |
| Investigate | Team |
| Jackson MS | Treas [Treasurer] |
| Lineage | United States |
| Meeting | Vice P [Vice President] |
| Merry | Visit |
| October | Voting |
| Paducah KY | Workshop |
| Party | |

C S O R E S E A R C H A M
 X T N O T S U O H N E A T
 J F V I C E P O I H W F C
 S R N U L I N E A G E A E
 T A S E C D E S T I N F L
 R N A N N U A L S E E A E
 O C T O B E R I N L R M S
 P I D E C A T U R A L I S
 E S P S E R P J G R A L E
 R V I S I T D A R F U Y T
 C I D K S A T C E R Y A A
 I L N H P N E K A I A V T
 N L E K A O F S T E D A S
 V E T L R T F O P N S C D
 E L T E T O U N O D U N E
 S A A N Y H B M H S B O T
 T R E A S P H S S T M T I
 I P A D U C A H K Y U N N
 G U G N I T O V R M L A U
 A M E R I C A N O A O S C
 T A G D R A O B W E C A K
 E Y R R E M G N I T E E M
 R E T S I G E R F A L L Y
 O M D L E I F G N I R P S